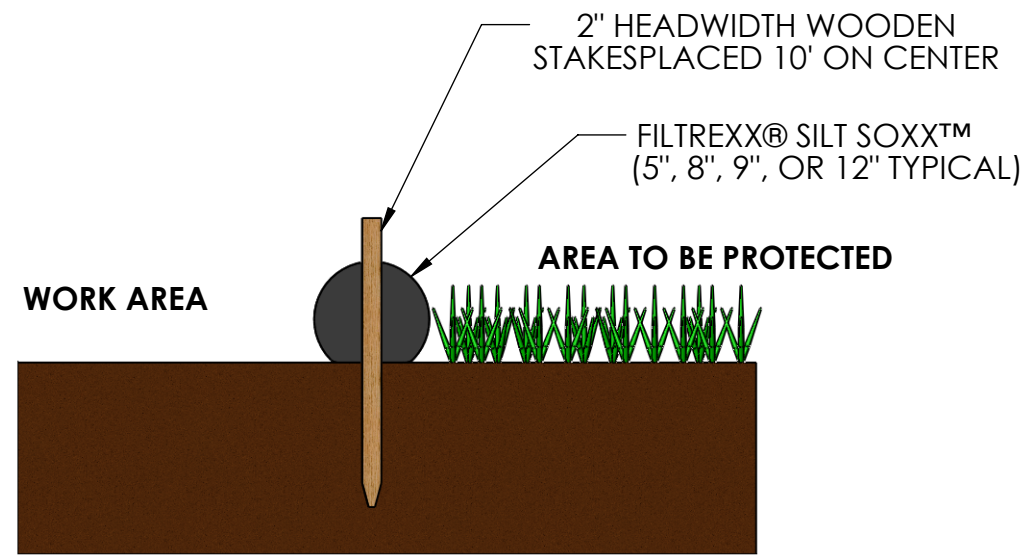
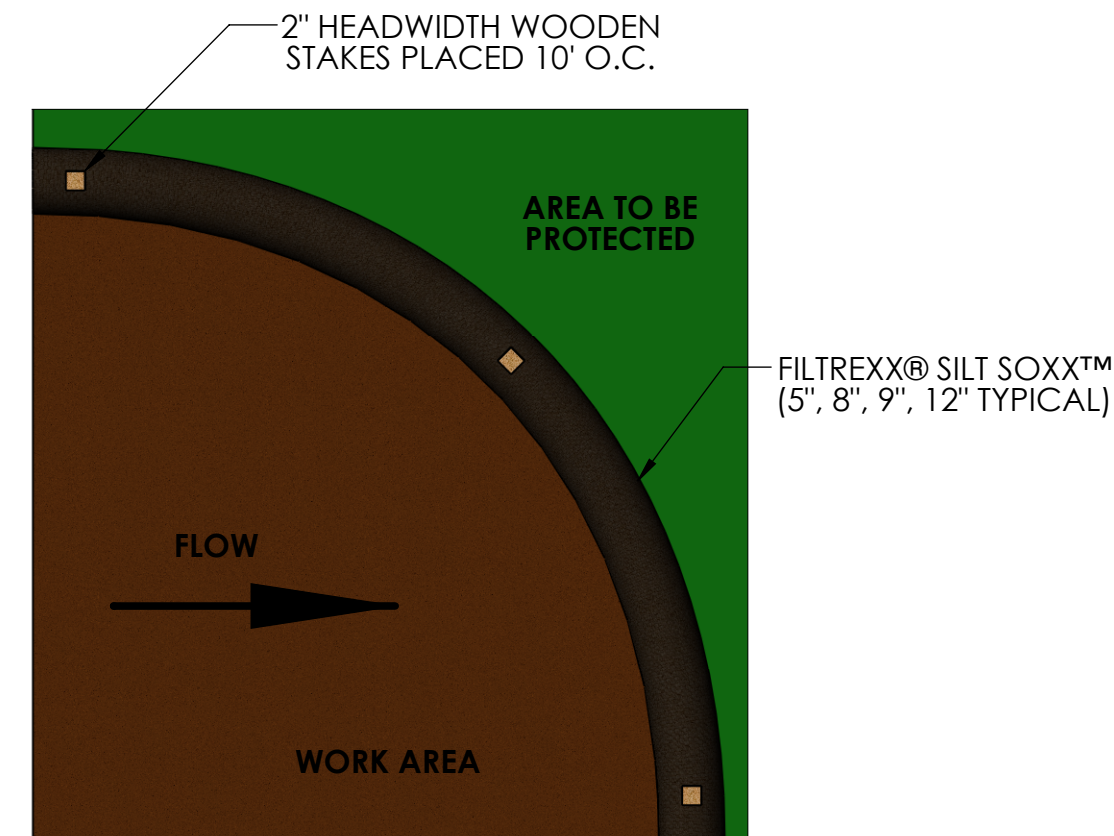


FILTREXX® SILT SOXX™



SECTION VIEW



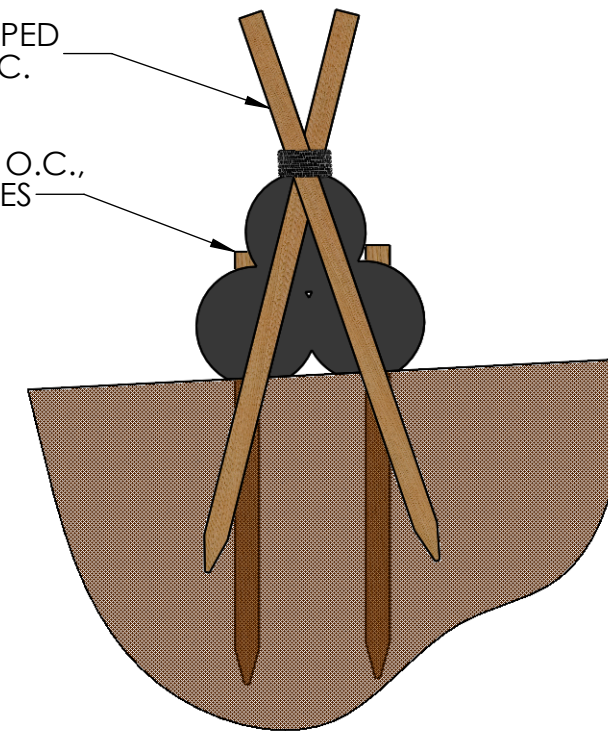
TOP VIEW

- NOTES:
1. ALL MATERIAL TO MEET FILTREXX® SPECIFICATIONS.
 2. SILT SOXX™ FILL TO MEET APPLICATION REQUIREMENTS.
 3. COMPOST MATERIAL TO BE DISPERSED ON SITE, AS DETERMINED BY ENGINEER.

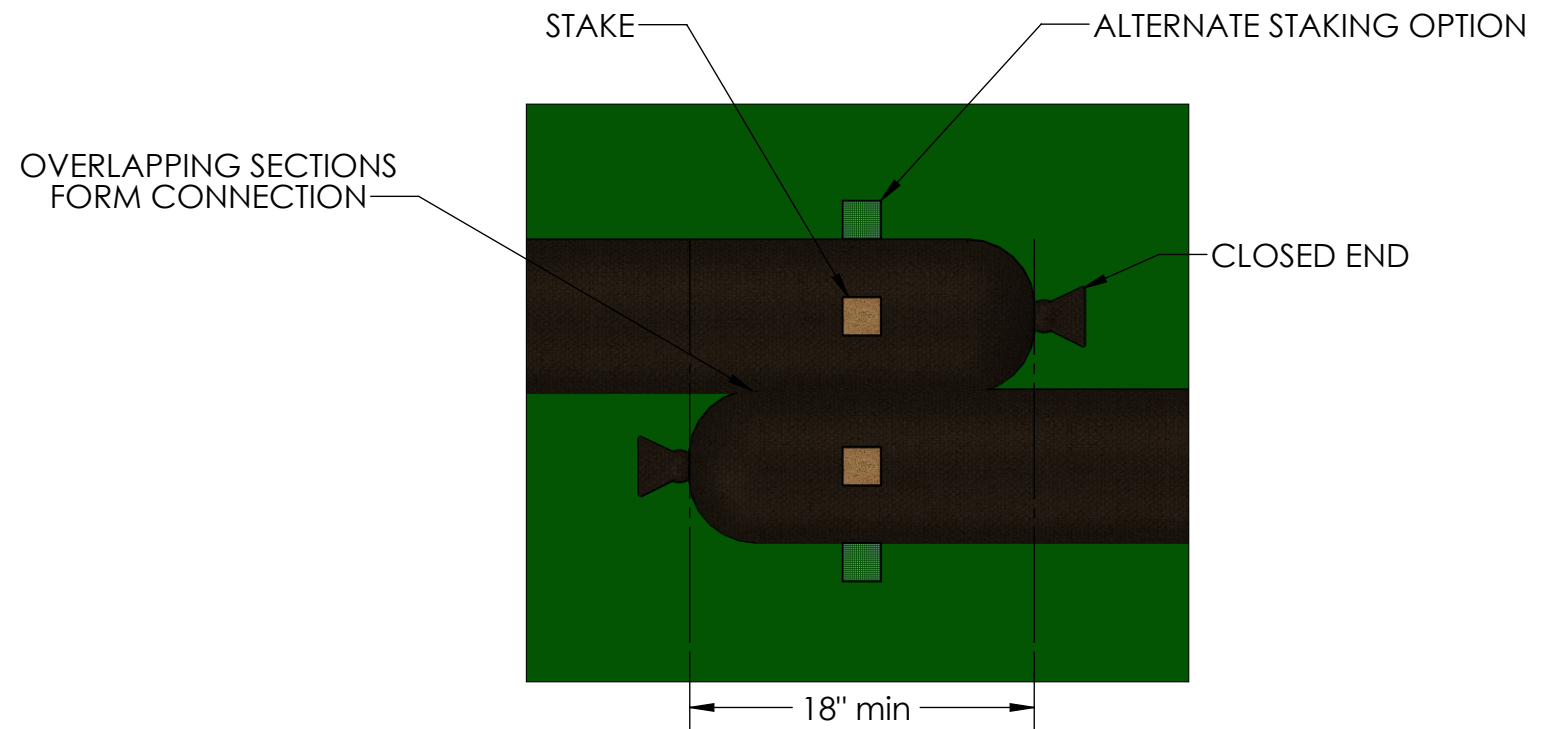
FILTREXX® PYRAMID STAKING DETAIL

(2) 2"x2"x48+" HARDWOOD STAKES, WRAPPED TOGETHER WITH 16 GAUGE WIRE, 10' O.C.

2"x2"x36" HARDWOOD STAKE, 10' O.C., STARTING 5' FROM ANGLED STAKES



COMPOST SOCK CONNECTION/ATTACHMENT DETAIL



THIS DRAWING AND ALL INFORMATION CONTAINED HEREIN IS THE PROPERTY OF FILTREXX INTERNATIONAL, LLC AND MAY NOT BE COPIED, REPRODUCED OR DIVULGED TO UNAUTHORIZED PERSONS WITHOUT THE EXPRESS WRITTEN CONSENT OF FILTREXX INTERNATIONAL IT IS PROVIDED SOLELY FOR THE CONVENIENCE OF THE USER AND SHALL BE RETURNED UPON REQUEST.

DIMENSIONS ARE IN INCHES
 ANGULAR: BEND ± 2°
 TWO PLACE DECIMAL ± .015
 THREE PLACE DECIMAL ± .005

DO NOT SCALE DRAWING

	NAME	DATE
DRAWN	DAN	6/11/2013
CHECKED		
ECO		

filtrex[®] LAND IMPROVEMENT SYSTEMS
 let nature do it.
 FILTREXX INTERNATIONAL
 35481 GRAFTON EASTERN RD.
 GRAFTON, OH 44044
 420-926-2607
 WWW.FILTREXX.COM

SIZE: D	TITLE: FILTREXX® SILT SOXX™ & SEDIMENT TRAP™ DETAILS	REV: NC
DWG/PART NO. 1		SHEET 1 OF 1